



**NORTHAMPTONSHIRE
POLICE, FIRE & CRIME
COMMISSIONER**
Danielle Stone

Safe and Sound **Young people**

Danielle Stone Police, Fire and Crime Commissioner

Keeping children and young people safe and giving them the best possible start in life is one of the most important responsibilities we share across public services.

Each element connects, creating a system of prevention, education and support.

This manifesto sets out clearly what we are delivering in Northamptonshire to support young people, why it matters, and the difference we are determined to make - now and for the future. It is both a statement of intent and a call to action.

My Safe and Sound agenda is built on a simple belief: prevention works. When we step in early, listen, and provide the right support at the right time, we can change outcomes for young people, families and communities. We can protect children from exploitation, steer them away from criminality and help them feel safe, valued and understood.

Safer communities cannot be achieved by policing alone. That is why I have taken a delivery-led, partnership approach, bringing policing, fire, youth services and specialist practitioners together into a single, joined-up offer for young people. Each element connects, creating a system of prevention, education and support.

Our specialist teams work directly with young people and families, delivering targeted interventions that address vulnerability, reduce harm and tackle the root causes of risk. This approach prevents escalation, reduces demand on emergency services and allows enforcement to focus where it is truly needed.

The impact is clear, fewer young people drawn into harm, stronger safeguarding, and safer communities. But this work must continue to grow. This manifesto sets out how we will strengthen partnerships, expand our reach and ensure more young people receive support before crisis point.

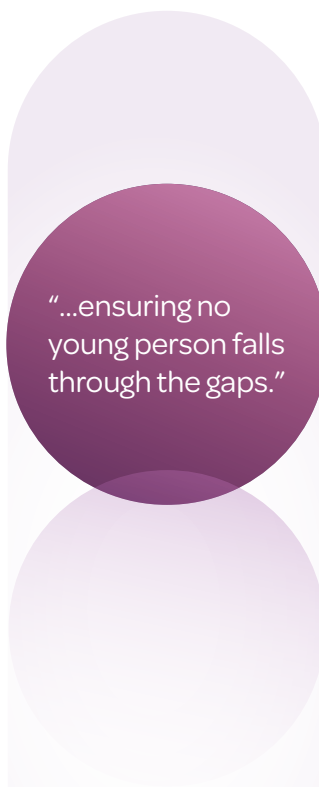
My message to Parliament and policymakers is this - investing in prevention is essential. When we protect and support young people today, we reduce crime tomorrow and build safer communities for everyone.

I am proud of what has been achieved in Northamptonshire. This manifesto captures that groundbreaking work and the lasting legacy we are committed to delivering for our young people.

Our delivery programmes for young people

Safe and Sound Young People is delivered through several integrated areas, forming a single preventative youth offer from the Police, Fire and Crime Commissioner.

These workstreams complement the work of partners including Northamptonshire Police, Northamptonshire Fire and Rescue Service, the local authorities, the Children's Trust, health and specialist youth providers, ensuring no young person falls through the gaps.



"...ensuring no young person falls through the gaps."

Anti-Social Behaviour Early Intervention Team
Early prevention and intervention

[PAGE 5](#)

Girls' Pathway Project
Early identification and targeted support preventing exploitation and violence against vulnerable girls

[PAGE 6](#)

Domestic Abuse
Prevention, protection and early support

[PAGE 7](#)

VOICE
Helping child and youth victims and witnesses cope, recover and navigate the justice process

[PAGE 10](#)

Serious Violence Prevention Partnership
Building awareness and reducing risk

[PAGE 10](#)

Prison Intervention Project
Breaking cycles of offending

[PAGE 11](#)

Immediate Justice Project
Constructive pathway for young people

[PAGE 11](#)

Missing Persons Investigations Unit
Safeguarding vulnerable young people

[PAGE 12](#)

Youth Violence Intervention Unit
Preventing exploitation and gang involvements

[PAGE 12](#)

Youth Connect Consultation
Hearing the voice of young people

[PAGE 13](#)



“Communities told me they just want to feel safer, and I have drawn together all the right services with a shared mission, to tackle anti-social behaviour and meet my mission for public safety...”

Anti-Social Behaviour Early Intervention Team

The Early Intervention Team is one of the first initiatives of its kind nationally, embedding specialist Targeted Intervention Officers directly within Neighbourhood Policing Teams and schools across Northamptonshire. This approach provides police officers and schools with an immediate pathway to refer young people, aged 10–17, as soon as concerns begin to emerge.

Following referral, specialists deliver tailored help to identify root causes of concerning behaviour at an early stage. This can include one-to-one or whole family support, lasting up to 12 weeks, so the young person can understand the harm they've caused through poor behaviour such as nuisance activity, shoplifting and criminal damage.

This team is directly supporting police to tackle an issue that really matters to communities. It reduces future demand on policing and diverts young people away from criminality.



Girls' Pathway Project

Early identification and targeted support preventing exploitation and violence against vulnerable girls. The project reduces harm, strengthens resilience and helps young women grow safer, more confident and better protected as they move into adulthood.

Girls at risk of exploitation are often hidden in plain sight, with harm masked by coercion, grooming and complex vulnerabilities. Without early support, risk escalates quickly.

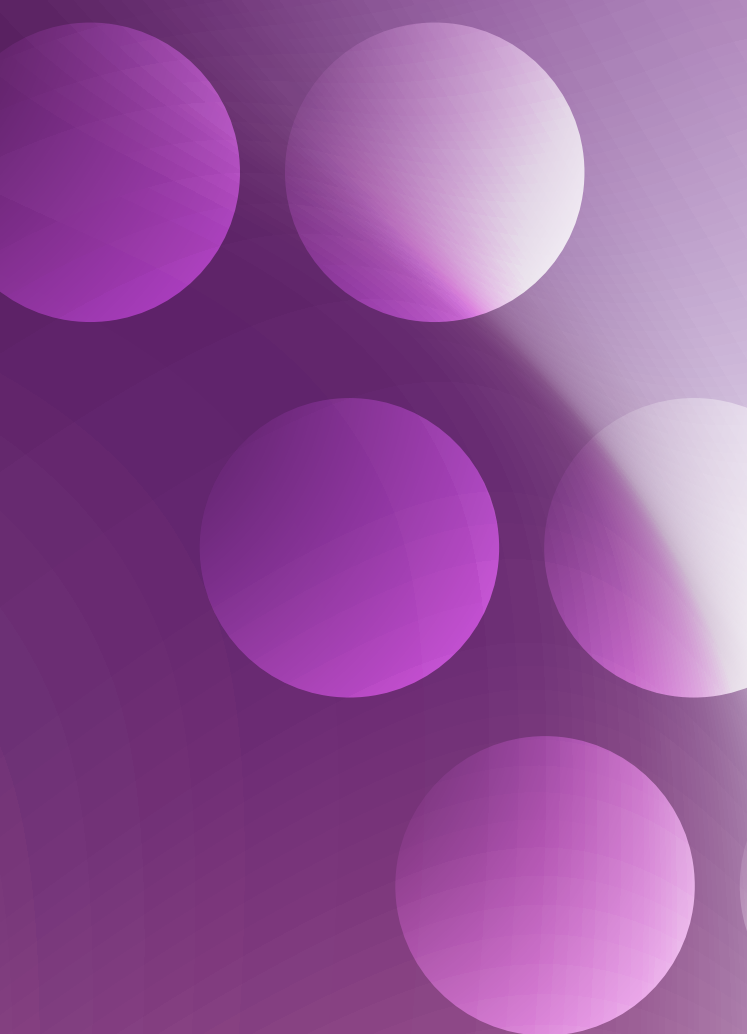
The Girls' Pathway Project was launched as a specialist early-intervention programme, in partnership with Northamptonshire Police and the Youth Violence Intervention Unit, to prevent criminal involvement.

Girls are identified proactively through police intelligence, custody checks and safeguarding

screening – with many presenting with multiple overlapping risks, including anti-social behaviour, weapons, substance misuse and exploitation. It's at this point Danielle's team steps in to work with schools, social care and safeguarding partners to deliver support to reduce crime and disrupt pathways into exploitation and harm.

By protecting young women as they move into adulthood, it supports the county's ambition to halve violence against women and girls and reflects national prevention priorities.

“Too many girls are being drawn into risk in ways that are almost invisible. The Girls' Pathway shows what can happen when we identify vulnerability early and wrap support around a child before harm becomes rooted.”



“...we are ensuring children and young people receive focused, trauma-informed support at the point when it can make the greatest possible difference.”

Domestic Abuse

Domestic abuse has a lasting impact on children and young people, shaping their safety, wellbeing and future relationships. The Early Intervention Domestic Abuse Support Team delivers a nationally leading early help model for victims, ensuring their children are supported before situations reach crisis point.

The team is made up of qualified Independent Domestic Violence Advisers (IDVAs) and Children’s Domestic Abuse Advocates who respond quickly following 999 calls to police. They deliver support to children, alongside practical work with parents and carers, including safety planning, parenting strategies, contact arrangements and access to legal and specialist services.

The service fills a critical gap for lower-risk cases, reduces demand on policing, prevents escalation and stabilises families sooner.

One-to-one support helps children:



Build confidence, resilience and emotional coping skills

Develop healthy views of relationships and boundaries

Understand what they have experienced

VOICE

helping child and youth victims and witnesses cope, recover and navigate the justice process

Immediate Justice Project

Constructive pathway for young people

Serious Violence Prevention Partnership

building awareness and reducing risk

Girls' Pathway Project

early identification and targeted support preventing exploitation and violence against vulnerable girls

Police

Prison Intervention Project

breaking cycles of offending

Anti-Social Behaviour Early Intervention Team

early prevention and intervention

Youth Connect Consultation

hearing the voice of young people

Missing Persons Investigations Unit

safeguarding vulnerable young people

Fire

Youth Violence Intervention Unit

preventing exploitation and gang involvement

Domestic Abuse

prevention, protection and early support

Young people thrive as safe citizens, in safer communities

Voice for Victims and Witnesses

Voice for Victims and Witnesses is Danielle Stone's commissioned service providing free, confidential support to victims and witnesses aged six and above, whether or not a crime has been reported.

Voice provides specialist emotional and practical support to young people affected by crime, including domestic abuse, sexual offences, hate crime, anti-social behaviour and serious road harm.

Practitioners offer a safe space where they can be heard and understand what has happened to them. Counselling and trauma therapy is also provided for more intensive support, including those navigating traumatic or life-changing experiences.

They work closely with police, courts, schools, health and safeguarding partners to ensure joined up support prioritising recovery and long-term wellbeing.

By providing early, independent and trauma-informed support, Voice helps young people regain confidence, feel supported and move forward after crime- reducing long-term harm and strengthening resilience at a crucial point in their lives.

Northamptonshire Serious Violence Prevention Partnership

In response to the Serious Violence Duty introduced by Government in 2022, the Commissioner brings together partners from police, health, justice, local authorities and fire services through the Northamptonshire Serious Violence Prevention Partnership (NSVPP).

The model ensures each agency plays a role in identifying factors driving violence and where young people are most at risk of becoming victims.

Dedicated funding is allocated to projects operating across Northamptonshire, which are evidence based and provide the most impact.

Projects include:

- Primary prevention and positive diversion - school based sports mentoring and place based activity for children and young people aged 7-19
- The Pol-Ed scheme - education-led prevention that aims to raise awareness of good citizenship and the law
- Community youth provision - supporting vulnerable children through youth work, holiday activity and safe spaces
- Public awareness campaigns - challenging knife crime and abusive behaviour through preventative messaging

Prison Intervention Project

Trauma, stigma and instability caused by a parent or sibling entering custody can have lifelong consequences, significantly increasing the risk of poor mental health, disengagement from education and future involvement in crime.

The Commissioner's office and Northamptonshire Police joined forces to launch the Prison Intervention Project to support young people to feel seen and heard after a parent or sibling has received a custodial sentence.

Practitioners intervene swiftly once the Probation Service or Youth Justice System

identify a child who has been exposed to criminal behaviour and is not receiving support. Specialists offer focused prevention, emotional support and a safe space for young people to process their experiences for up to 16 weeks, with the aim of reducing vulnerability and breaking intergenerational cycles of offending.

"Early consequences matter for young people, and Immediate Justice helps turn harmful behaviour into a chance to contribute positively to their community."

Immediate Justice

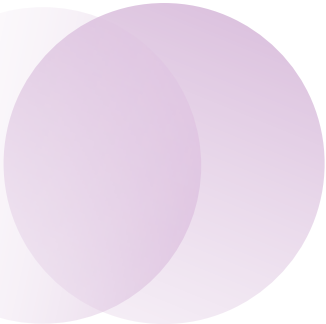
The Immediate Justice programme offers a constructive pathway for young people who have committed anti-social behaviour to take responsibility for their actions and repair the harm they have caused.

Referred by police for low-level offences such as vandalism, drug possession, or criminal damage, young people aged between 12 and 17 complete a minimum of four hours of meaningful, visible, reparative work in community spaces across Northamptonshire. Typical tasks include litter picking, graffiti removal, or repairing public spaces.

People referred to the scheme are guided by skilled Immediate Justice Supervisors who encourage reflection and accountability. The combination of consequence and guidance provides participants with the opportunity to put things right and discourages them from reoffending, setting them on the right path for their future.

Missing Person's Investigation Unit

When a child goes missing, it is rarely an isolated incident. Each episode increases vulnerability to harm, including criminal and sexual exploitation. The Commissioner's Missing Persons Investigation Unit, delivered in partnership with Northamptonshire Police, embeds specialists directly into the operational response.



"...this project is a shining example of what can be achieved when we work together..."

Operation Satin

Operation Satin is an award-winning early intervention programme, focusing on children and young people who have gone missing fewer than three times before risk and exploitation become rooted.

Practitioners are based within the Police Missing Persons Unit and meet young people promptly on return to identify why they went missing and address root causes through timely, tailored support.

This approach has reduced repeat missing episodes and demand on policing. Young people report feeling listened to, parents feel better supported - with safer outcomes for children, communities and public services.

Youth Violence Intervention Unit

Many young people are drawn into violence and exploitation because of vulnerabilities and a lack of timely support. This is why the Youth Violence Intervention Unit, a joint unit with Northamptonshire Police, was set up to help those who are at risk of knife crime and criminal exploitation.

The team step in before behaviour escalates and, through sharing information with schools, police, social care and safeguarding partners, they work to reduce the chance of criminalisation and long-term disengagement from education.

Practitioners work hard to build trusted relationships with the individual and their families, focusing on their experiences, pressures and influences rather than enforcement alone.

Interventions help young people to:

- Understand the risks and consequences of knives and weapons
- Recognise grooming, coercion and exploitation
- Manage emotions and conflict safely
- Build healthy relationships and peer networks

Listening to our young people - Youth Connect consultation

Putting young people's voices at the centre of policy and practice is essential to delivering effective prevention and safeguarding. To ensure Northamptonshire's youth offer reflects lived experience, the Police, Fire and Crime Commissioner supported a countywide youth consultation.

Robust evidence base

More than 2,400 young people aged 11-18 (and up to 25 for those with additional needs) took part across Northamptonshire, making this one of the largest youth consultations conducted locally.

A commitment to youth voice

We will continue to listen to young people, and make sure what they tell us is used to build engagement and involvement – shaping priorities, influencing commissioning and ensuring services meet need.

Northamptonshire Police pathways for young people

The Youth Violence Intervention Unit (YVIU)

A joint unit with the Early Intervention Team aims to reduce serious violence and exploitation for young people, with a focus on prevention and intervention.

Harmful Sexual Behaviours

An Early Intervention Team is focused on children displaying harmful sexual behaviours, and with families with parents and siblings in custody to break cycles of offending.

Child Exploitation Hub

(with Northamptonshire Children's Trust)

Northamptonshire uses the Child Exploitation Risk Assessment Framework to identify and track risks for children being groomed or forced into sexual activities and criminal exploitation.

Youth Justice Service

Northamptonshire Police has dedicated police officers within the Youth Justice Service. The Youth Justice Service is a statutory multi-agency partnership that works with the police, courts, and other partners to reduce offending by young people aged 10-18.

Police Cadets

Police Cadets is the nationally recognised group open to 13 to 18 year-olds wanting a chance to build confidence, support their community and learn new skills now and for the future.

Northamptonshire Fire and Rescue Service pathways for young people

Fire Cadets

A programme for young people aged between 13-18. Guided by Fire Service youth instructors, the Cadets gain an understanding of the Fire and Rescue Service through training and community work.

Engagement with schools and colleges

Work with schools and colleges across the county to deliver a range of behavioural change talks and events on fire, water and road and rail safety.

The Staywise online platform also gives free access to safety resources aligned with the curriculum.

Early Intervention courses

The Fire Service works with partners to deliver early intervention ARC (Action, Reaction, Consequence) courses. These blend educational safety sessions and practical training exercises to improve communication, teamwork and resilience.

Firesetters

The Firesetter and Hoax Caller intervention scheme works with young people who persistently set deliberate fires or make hoax 999 calls.

Internships

The intern scheme invites a select number of young people to gain insight and experience of working for a Fire and Rescue Service. There is an emphasis on selecting candidates from under-represented communities and backgrounds.



**NORTHAMPTONSHIRE
POLICE, FIRE & CRIME
COMMISSIONER**

Danielle Stone

You can find out more information about the work of Danielle Stone, Police, Fire and Crime Commissioner for Northamptonshire and read her public safety plan for the county at

www.northantspfcc.org.uk

Email
commissioner@northantspfcc.gov.uk

Write to us
**PFCC, Darby House, Darby Close,
Park Farm Industrial Estate, Wellingborough,
NN8 6GS**